



Remember,

These conservation areas are for all to enjoy. Their natural beauty deserves our respect. Please follow the rules.

Marine Protected Areas of the CNMI

MPAs are special conservation zones that protect our fish, corals, and invertebrates.

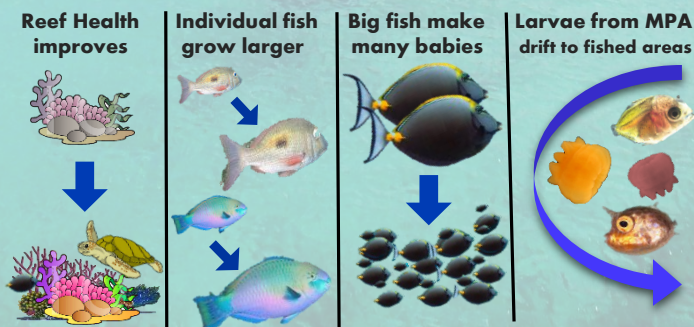
'No-Take' MPAs:

CNMI's 'No-Take' MPAs are areas where you cannot take anything at all including fish, clams, octopus, other invertebrates, sand and shells.

'Species-Specific' MPAs:

CNMI's 'Species-specific' MPAs, which are located at Laolao Bay and Lighthouse Reef, prohibit the take of trochus and sea cucumbers. However, harvesting fish is lawful in these areas.

What happens inside an MPA?



Have MPA Questions?

Visit www.cnmi-dfw.com or www.cnmicoralreef.com, or call the Division of Fish & Wildlife at **664-6032**.

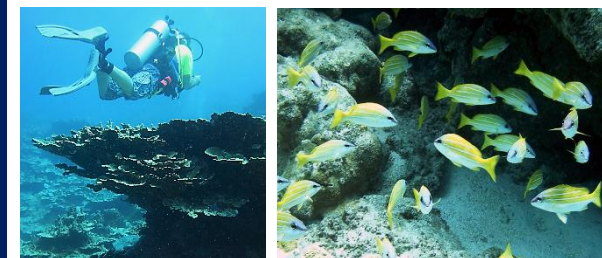
To report MPA violations:

Call DFW at **664-6031** or **989-6092/3/4/5**.

Division of Fish & Wildlife Partners



Printed on 6/20/2015 by:
CNMI Division of Fish & Wildlife
PO Box 10007, Lower Base Rd
Saipan, MP 96950



No-take Marine Conservation Areas

- Mañagaha Marine Conservation Area**
Established by Public Law 12-12. Located off the northwestern coast of Saipan, this conservation area includes roughly 2 sq. miles of marine and terrestrial habitat.



- Bird Island Sanctuary**
Established by Public Law 12-46. This sanctuary extends 1,000 feet off shore, protects 0.6 sq. miles of marine habitat, and includes the Grotto and Bird Island.



- Forbidden Island Sanctuary**
Established by Public Law 12-46. This sanctuary extends 1,000 feet off shore between Lau Lau Bay and Tank Beach.



- Tinian Marine Reserve, Tinian**
Established by Public Laws 15-90 & 17-14. This reserve, extending 1/2 mile offshore, sits between the Tinian Boat Harbor and South Carolinas Point. While this is a no-take reserve, **seasonal cast netting for certain fish species is allowed.**



- Sasanhaya Bay Fish Reserve**
Established by Rota Local Law 9-2. Located on the SE corner of Rota, this reserve was established to preserve the natural beauty, marine environment and historical wreckage of Sasanhaya Bay.



Species-Specific Conservation Zones

- Laolao Bay Sea Cucumber Sanctuary**
Established by Public Law 11-63 & CNMI AC 85-30.1-420. This sanctuary protects sea cucumbers from being harvested anywhere in Laolao Bay.

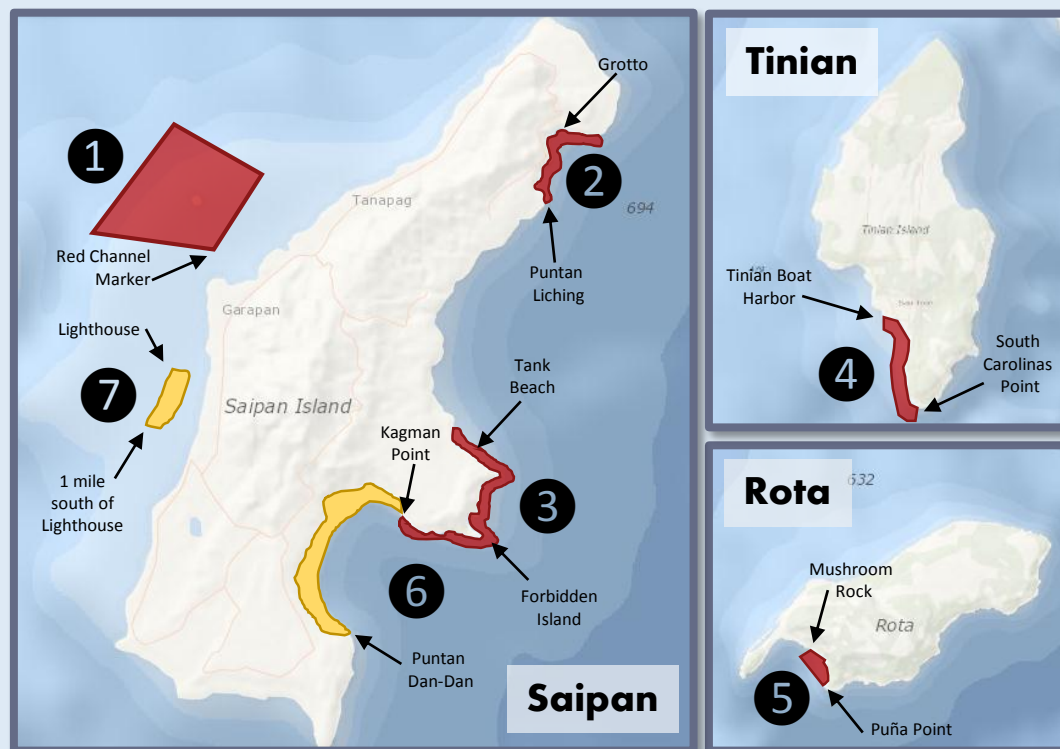


- Lighthouse Reef Trochus Sanctuary**
Established by CNMI AC 85-30.1-415. This reserve, extending one mile south from the Lighthouse marker in the Saipan lagoon, protects trochus from being harvested.



Our Seven Marine Protected Areas

Red= No-take Areas; Yellow= Limited Take Zones



Note: Map depicts general MPA locations only. Contact the Division of Fish & Wildlife for more information.

Rules in No-Take Marine Conservation Areas



Rules in Species-Specific Conservation Zones

