

Legend

- SLUMP Boundary
- Inland Area (HW)
- Shoreline (CRM APC)
- Lagoon Boundary (CRM)
- Lagoon (CRM APC)
- Reef (CRM APC)
- Lagoon Watersheds (CRM)

*Imagery - February 2011

Horsley Witten Group
Sustainable Environmental Solutions

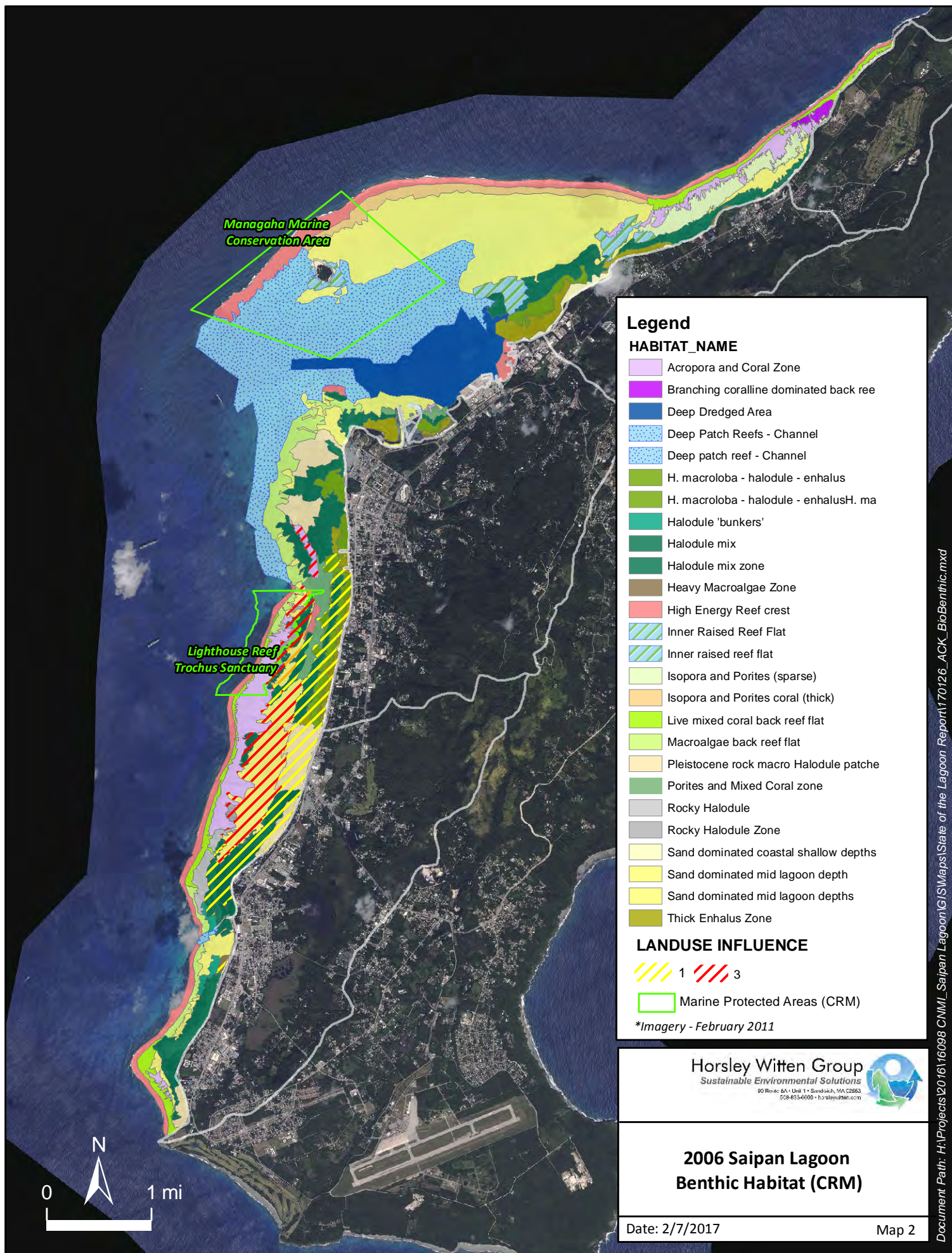
20 Route 6A • L. 11 • San Jose, CA 95131
505-533-6900 • www.horsleywitten.com

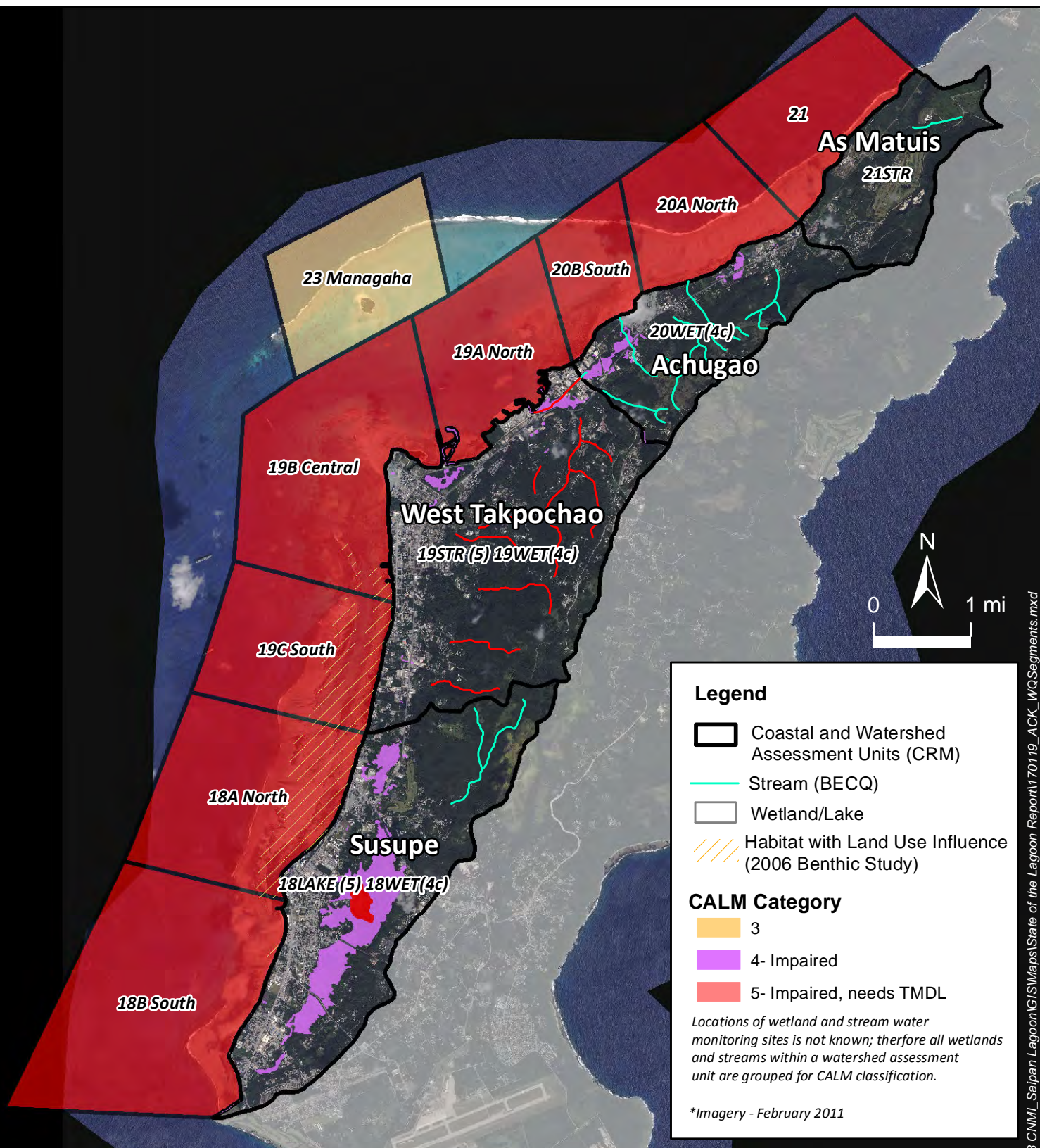


Saipan Lagoon Use Management Planning Areas

Date: 2/3/2017

Map 1





CALM Assessment Category	
1	All designated uses are supported, no use is threatened
2	Available data and/or information indicate that some, but not all of the designated uses are supported.
3	There is insufficient available data and/or information to make a use support determination
4a	A TMDL to address a specific segment/pollutant combination has been approved or established by EPA.
4b	A use impairment caused by a pollutant is being addressed by the state through other pollution control requirements.
4c	A use is impaired, but the impairment is not caused by a pollutant.
5	Available data and/or information indicate that at least one designated use is not being supported or is threatened, and a TMDL is needed. (A use is threatened if a waterbody is currently attaining WQs, but is expected to not meet WQs by the next listing cycle.)

Legend

- Coastal and Watershed Assessment Units (CRM)
- Stream (BECQ)
- Wetland/Lake
- Habitat with Land Use Influence (2006 Benthic Study)

CALM Category

- 3
- 4- Impaired
- 5- Impaired, needs TMDL

Locations of wetland and stream water monitoring sites is not known; therefore all wetlands and streams within a watershed assessment unit are grouped for CALM classification.

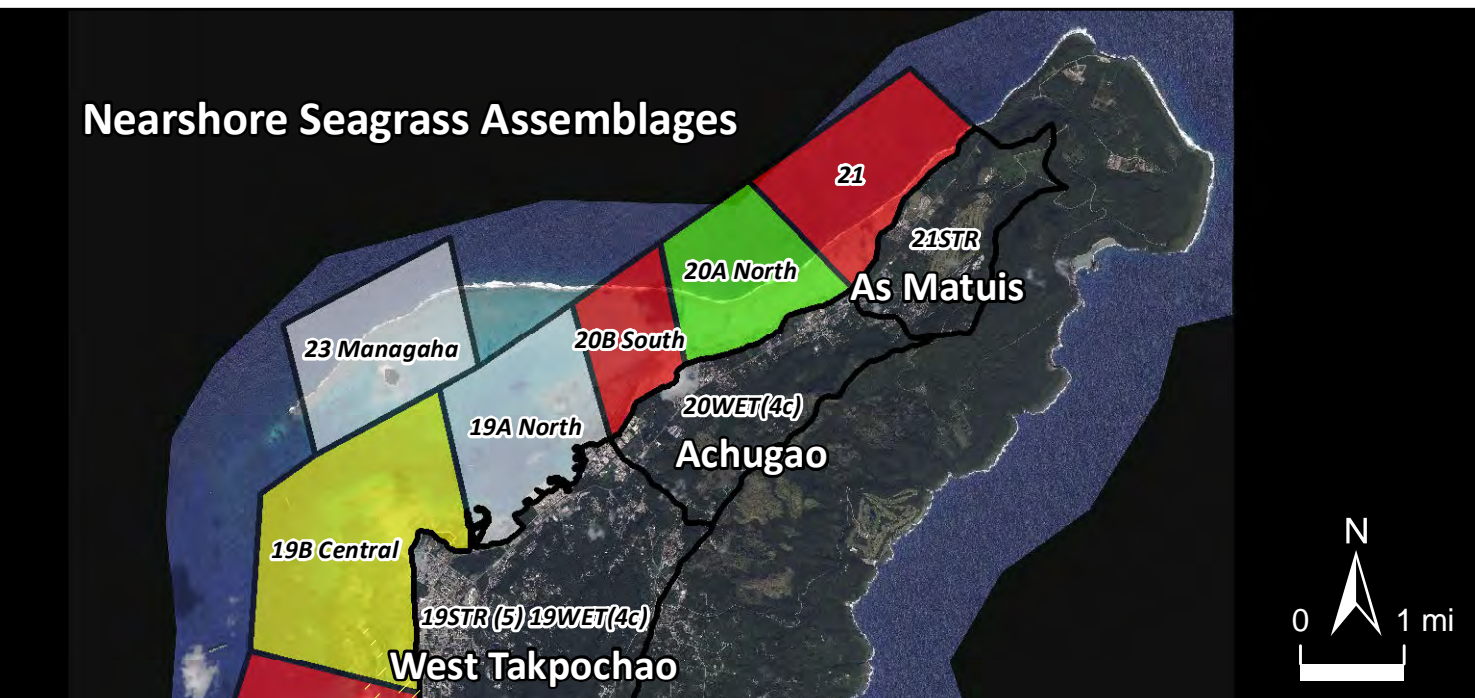
**Imagery - February 2011*

Horsley Witten Group
Sustainable Environmental Solutions
90 Route 6A • Unit 1 • San Jose, CA 95131
708-853-6000 • horsleywitten.com

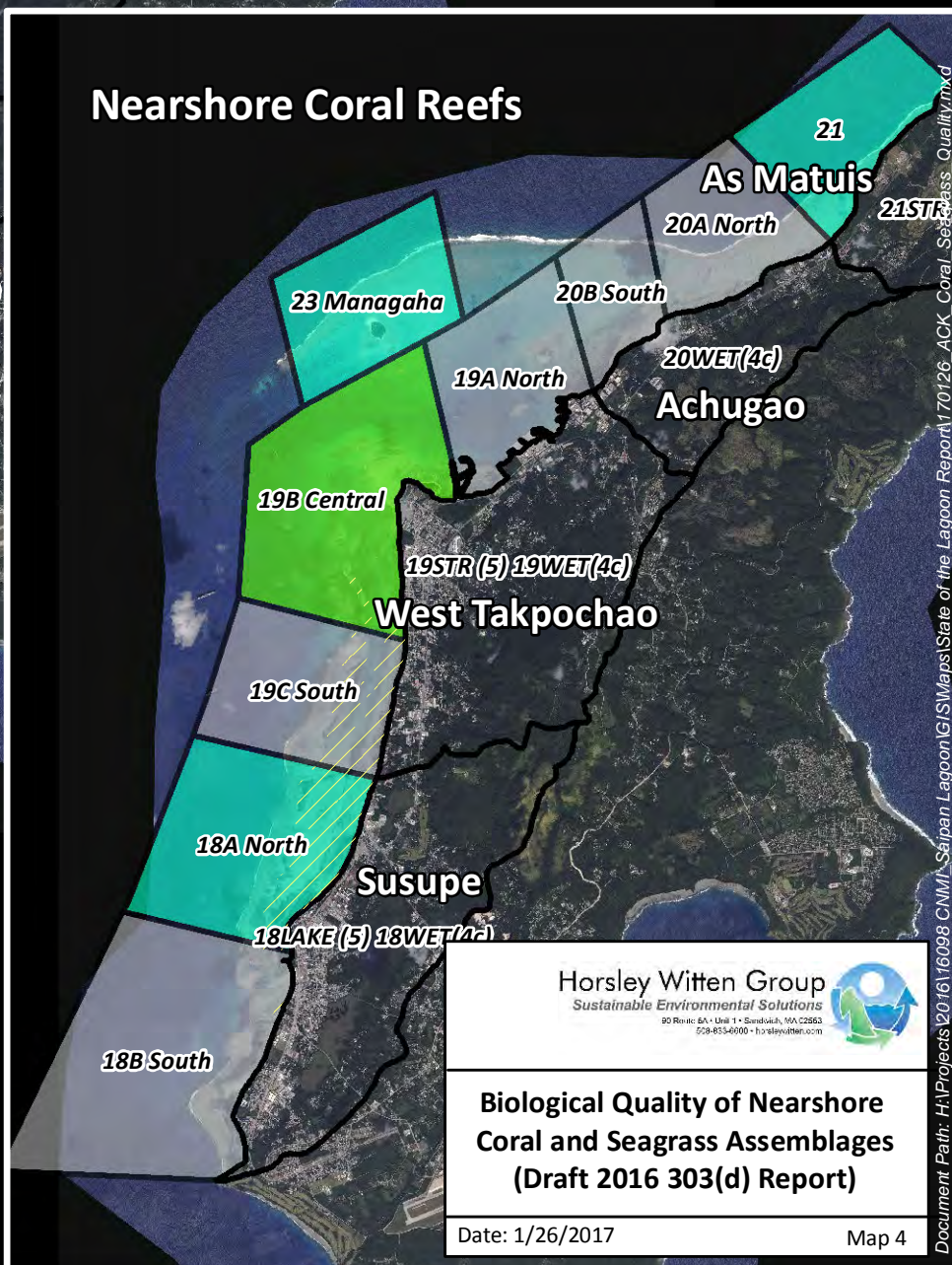
**Impaired Surface Waters
(Draft 2016 303(d) Report)**

Date: 2/3/2017 Map 3

Nearshore Seagrass Assemblages



Nearshore Coral Reefs



Legend

- Coastal and Watershed Assessment Units (CRM)
- Habitat with Land Use Influence (2006 Benthic Study)

ALUS Rank 2014-2016

- No Data
- Poor
- Fair
- Fair/Good
- Good

Locations of coral and seagrass monitoring sites is unavailable; therefore, data is presented by assessment unit.

*Imagery - February 2011

Horsley Witten Group
Sustainable Environmental Solutions
90 River St., Unit 1 • Sandwich, MA 02563
508-853-6000 • horsleywitten.com

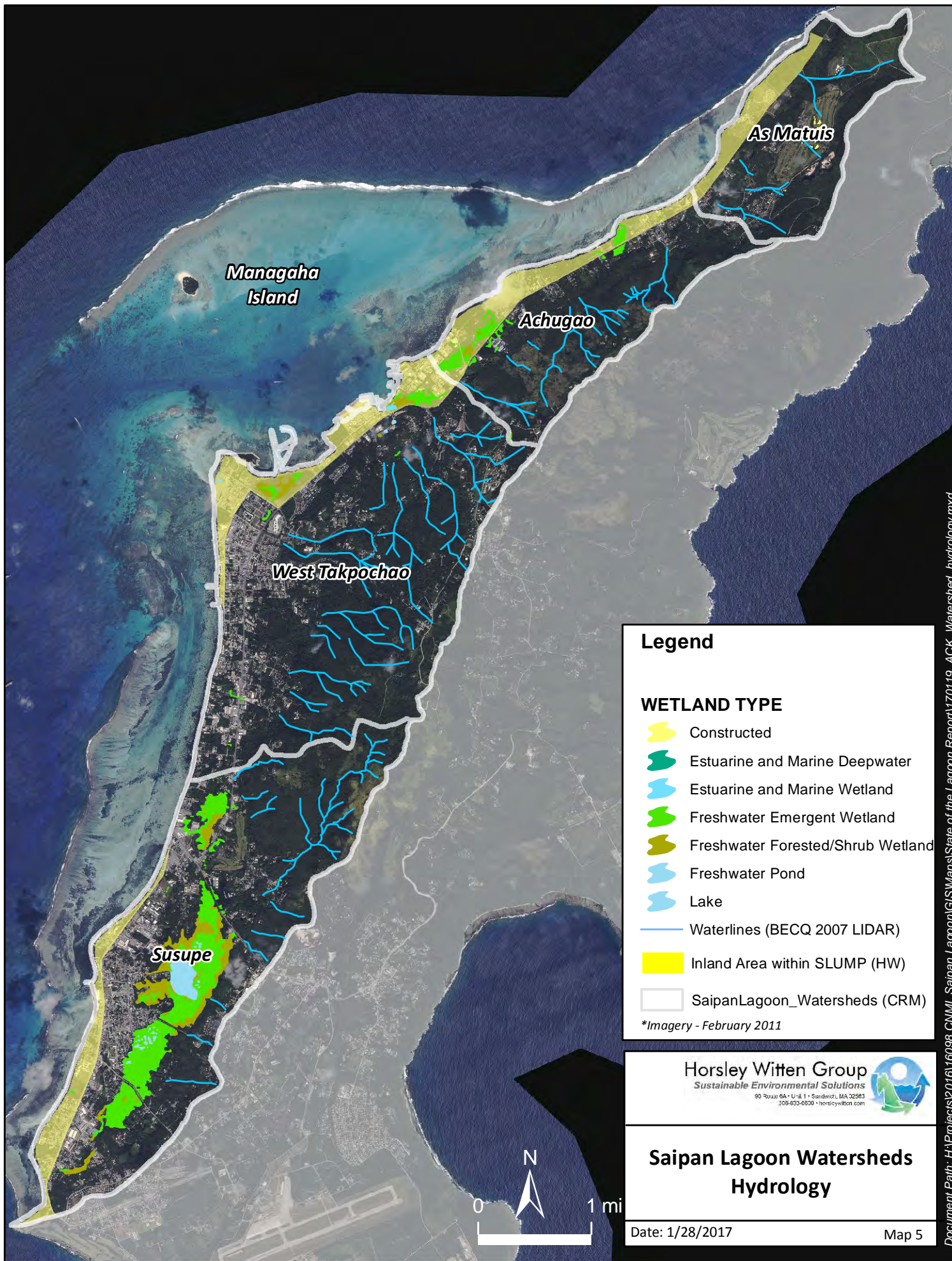


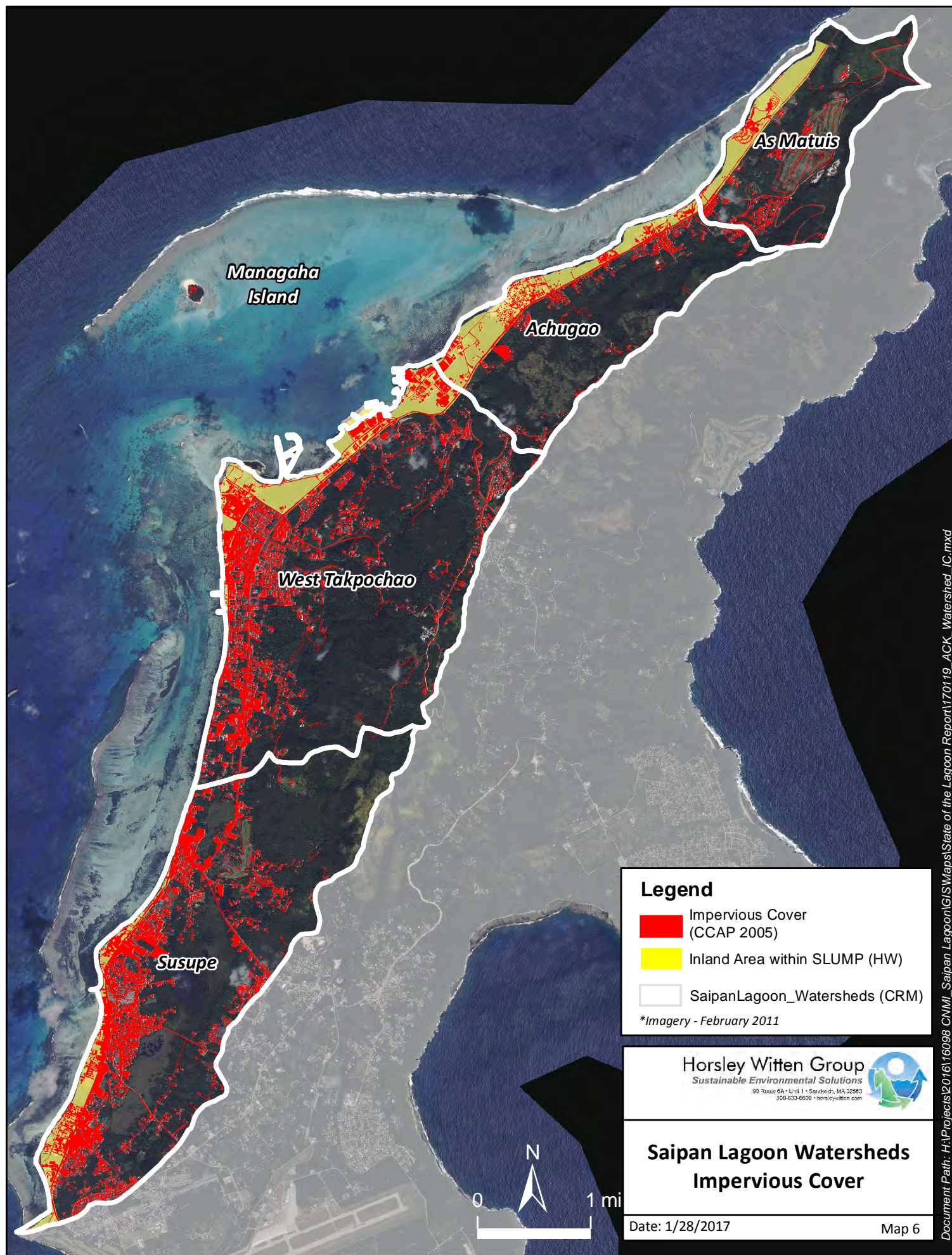
Biological Quality of Nearshore
Coral and Seagrass Assemblages
(Draft 2016 303(d) Report)

Date: 1/26/2017

Map 4

Document Path: H:\Projects\2016\16098 CMMI-Saipan Lagoon\GIS\Maps\State of the Lagoon Report\170126 ACK_Coral_Seagrass_Quality.mxd





Managaha
Island

As Matuis

Achugao

West Takpochao

Susupe

Legend

- Impervious Cover (CCAP 2005)
- Inland Area within SLUMP (HW)
- SaipanLagoon_Watersheds (CRM)

*Imagery - February 2011

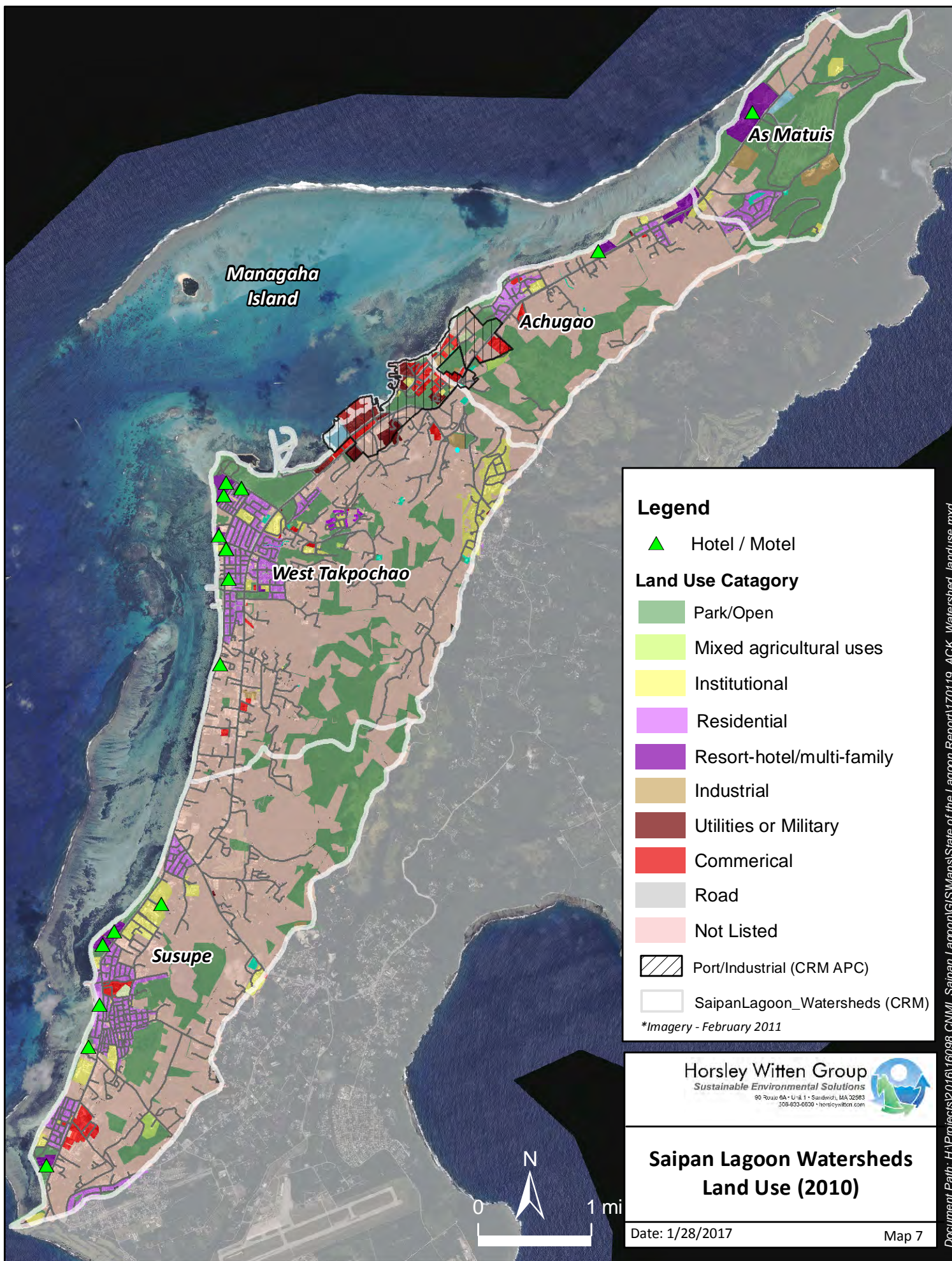
Horsley Witten Group
Sustainable Environmental Solutions
90 Route 6A • Unit 1 • Sandwich, MA 02583
208-832-5820 • horsleywitten.com

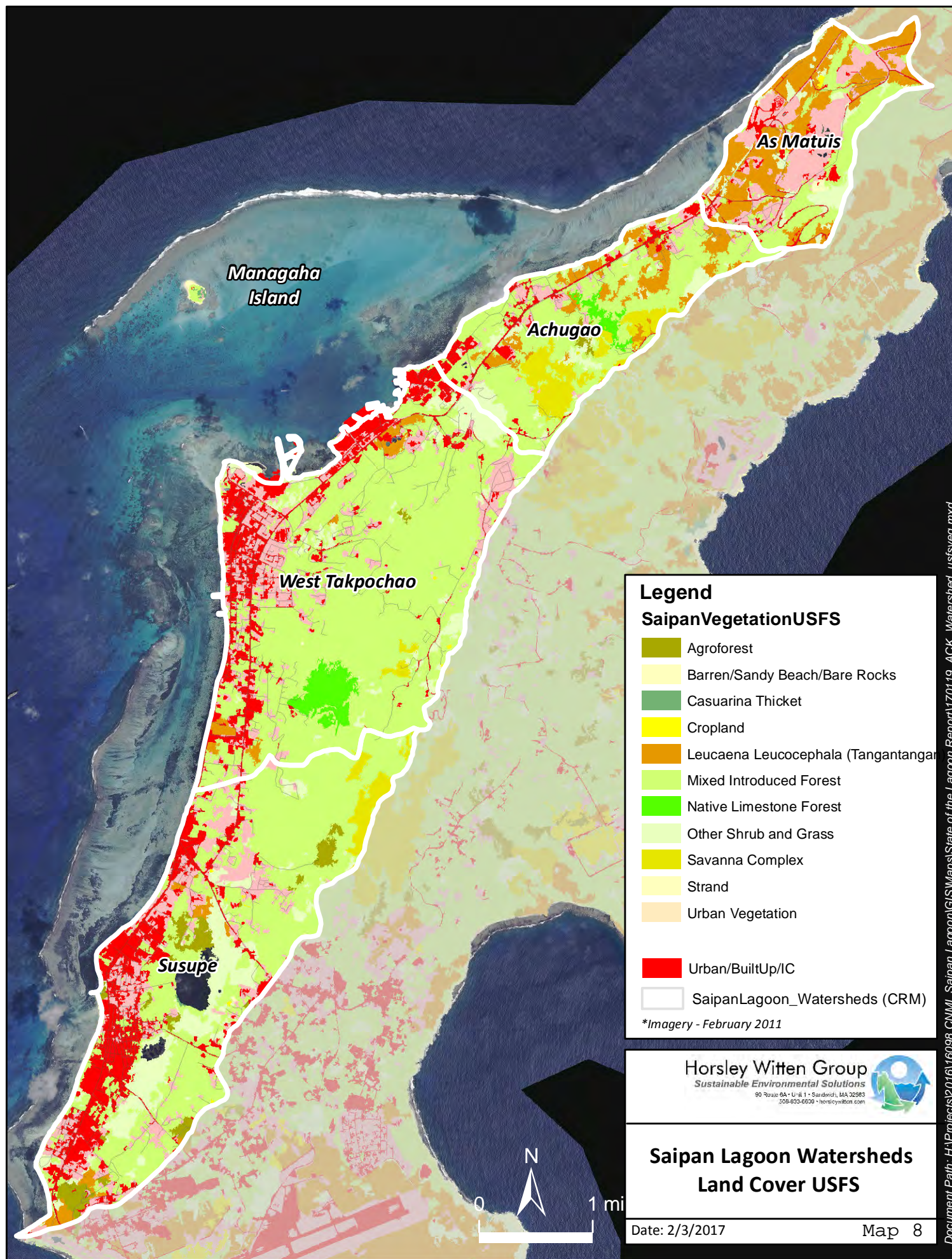


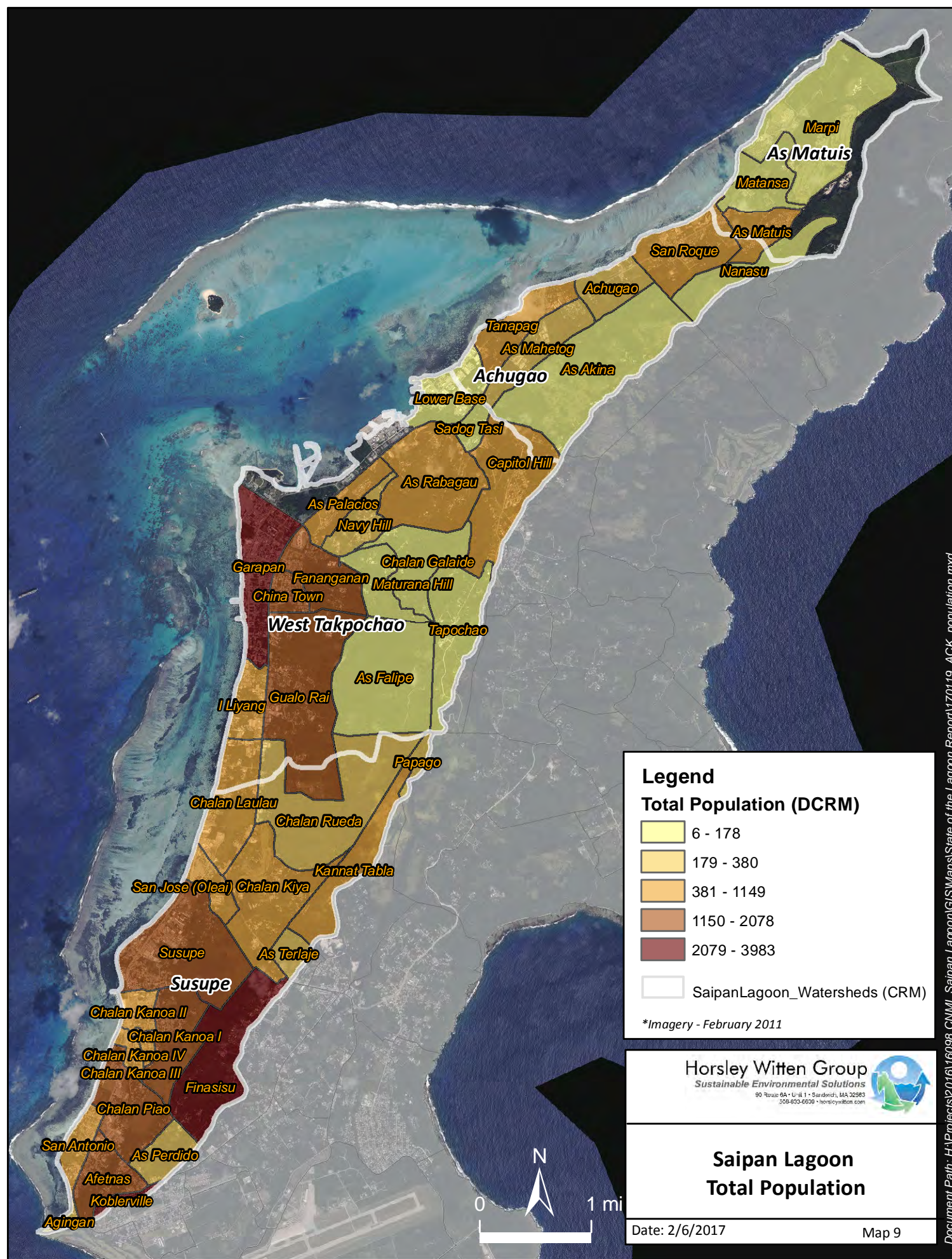
Saipan Lagoon Watersheds Impervious Cover

Date: 1/28/2017

Map 6

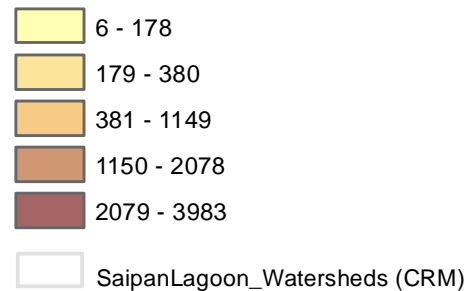






Legend

Total Population (DCRM)



*Imagery - February 2011

Horsley Witten Group

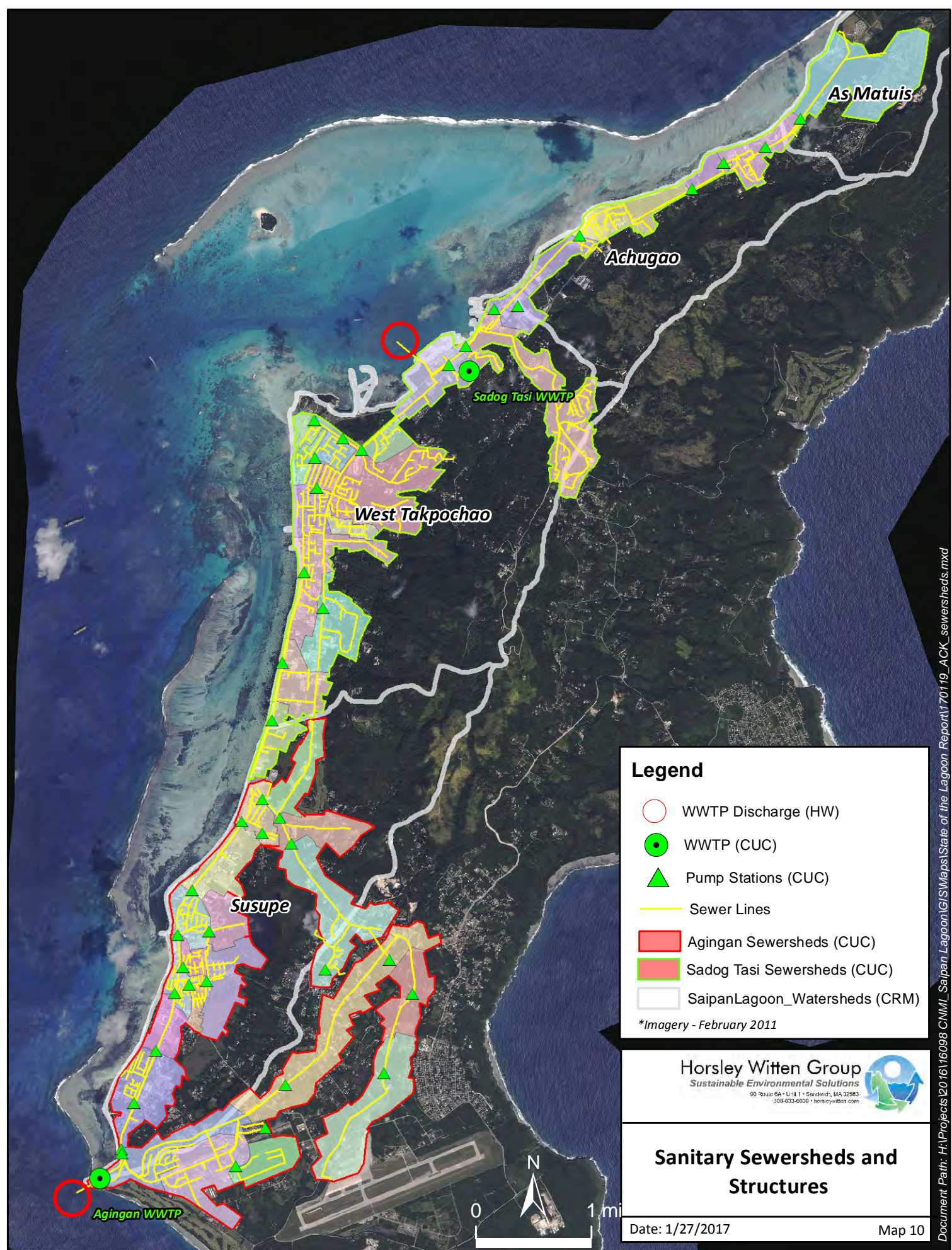
Sustainable Environmental Solutions
90 Route 6A • Unit 1 • Sandwich, MA 02583
508-833-5820 • horsleywitten.com

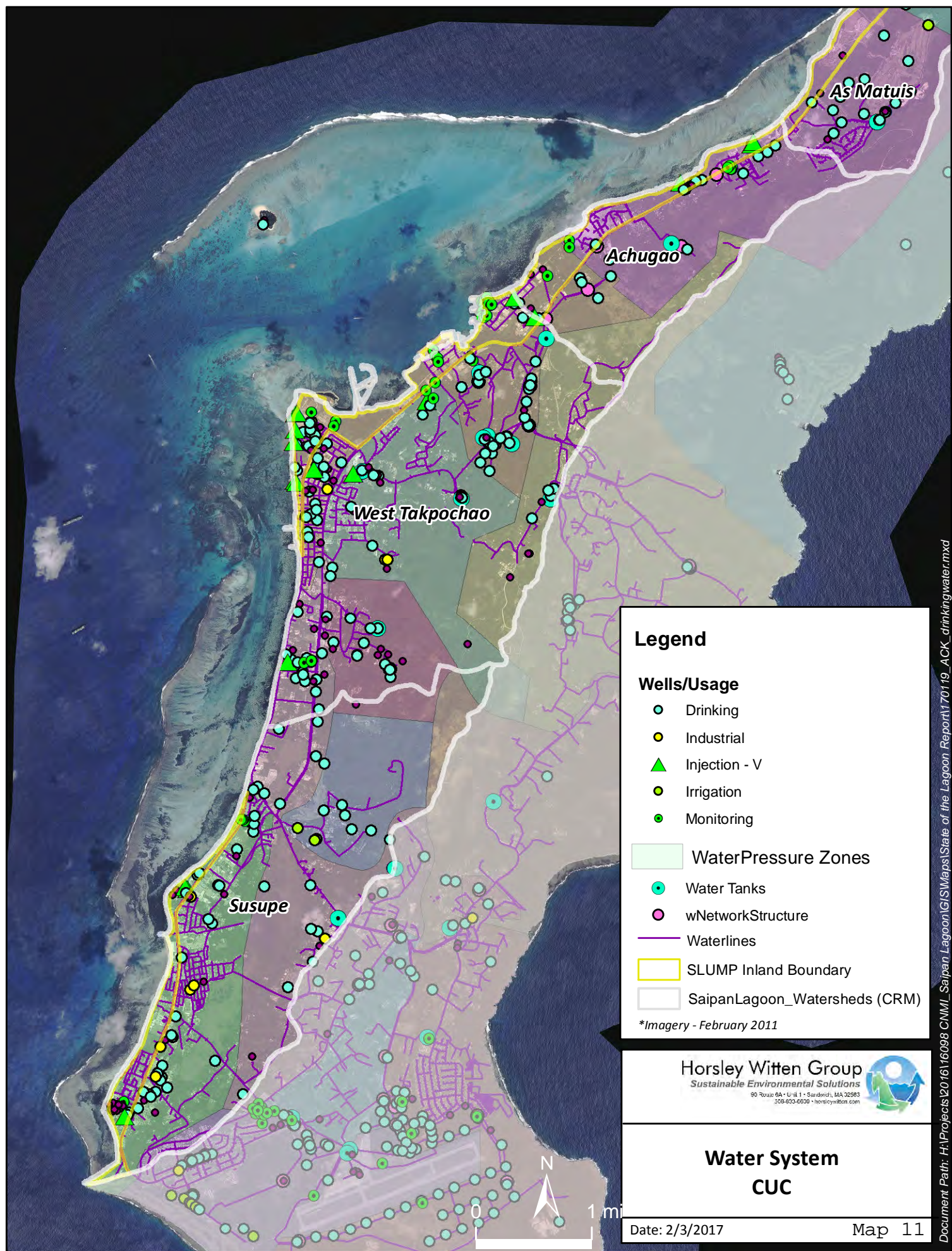


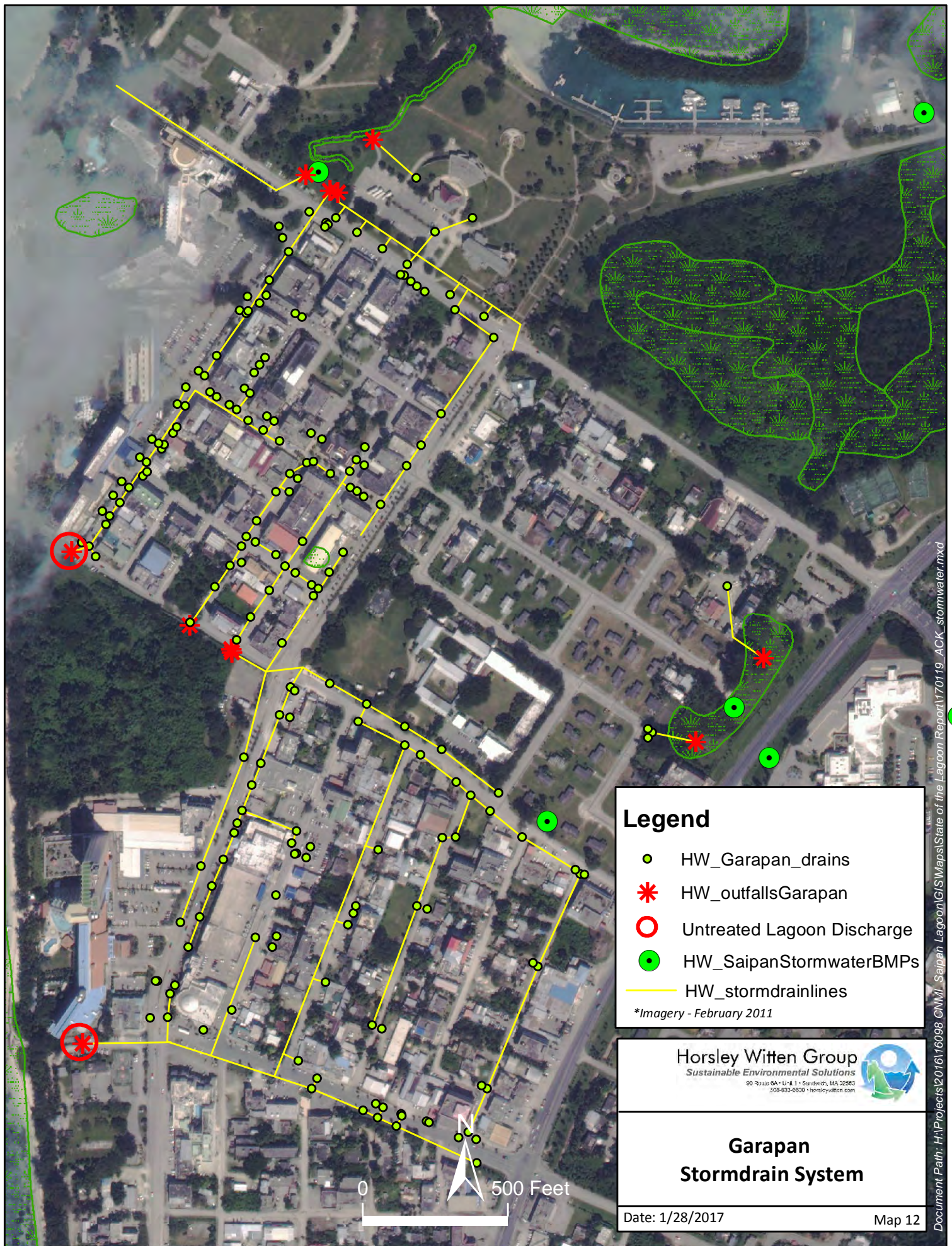
Saipan Lagoon Total Population

Date: 2/6/2017

Map 9







Legend

- HW_Garapan_drains
- * HW_outfallsGarapan
- Untreated Lagoon Discharge
- HW_SaipanStormwaterBMPs
- HW_stormdrainlines

**Imagery - February 2011*

Horsley Witten Group
Sustainable Environmental Solutions
90 Route 6A • Unit 1 • Sandwich, MA 02563
508-833-5600 • horsleywitten.com



**Garapan
Stormdrain System**

Date: 1/28/2017 Map 12

Document Path: H:\Projects\2016\16098 GNM\ Saipan Lagoon\GIS\Waps\State of the Lagoon Report\170119_ACK_stormwater.mxd

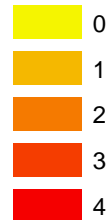
Combined Extractive Uses (Hex 30 m)

Combined Recreational Uses (Hex 30 m)


Legend


 Marine Protected Areas

MAX_SumCount

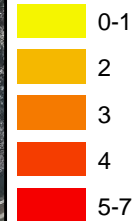


Legend

 Jetski Exclusion Areas

 Wrecks/Marine Landmarks

MAX_SumCount

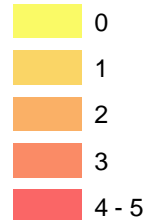


Combined Commercial Uses (Hex 30 m)

Combined All Dominant Uses (Hex 30 m)

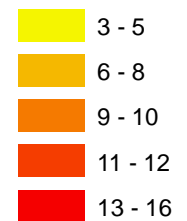
Legend

MAX_SumCount



Legend

TotalAllUses



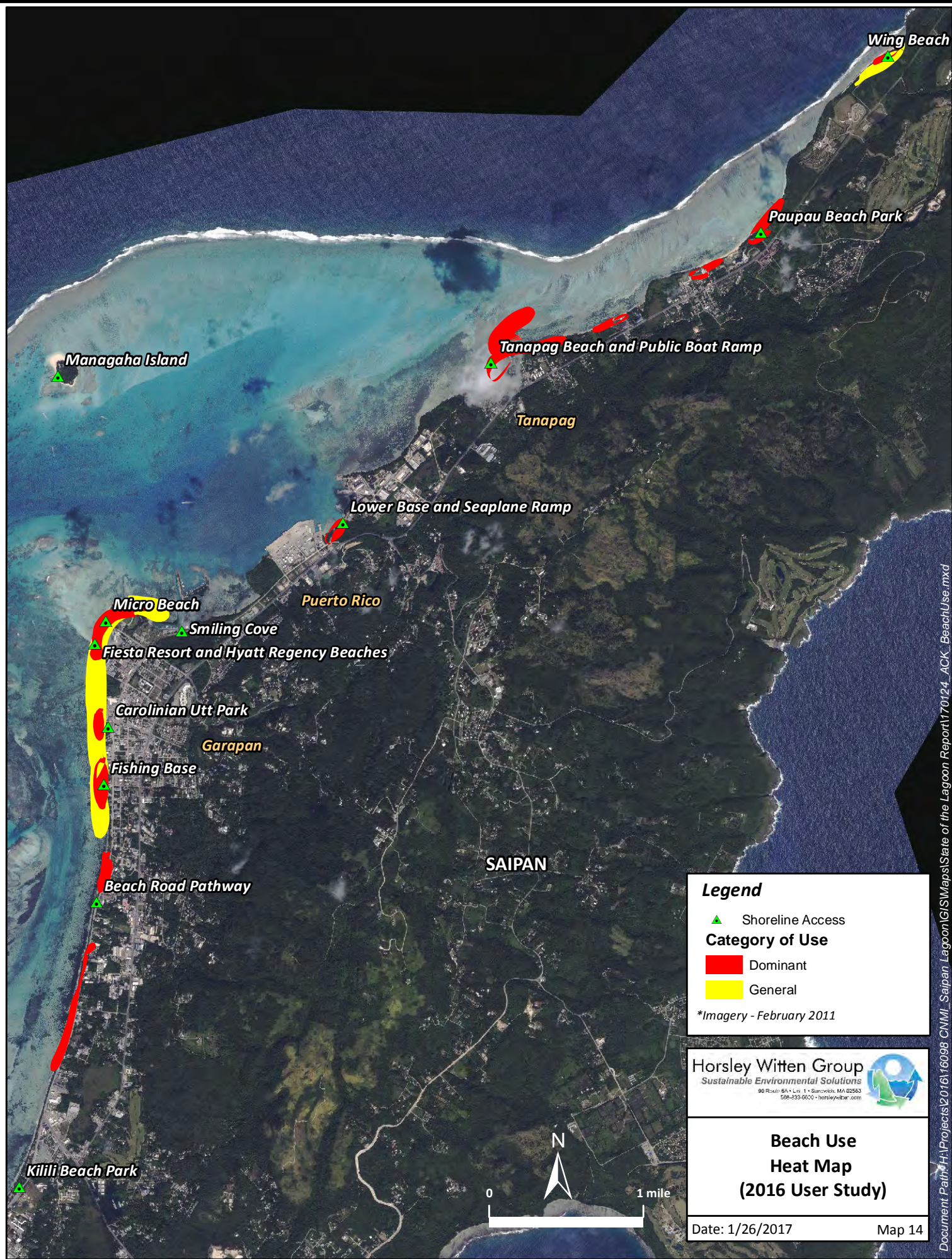
Horsley Witten Group
Sustainable Environmental Solutions
90 Route 8A • L1 • Saipan, MP 96963
508-255-0000 • horsleywitten.com

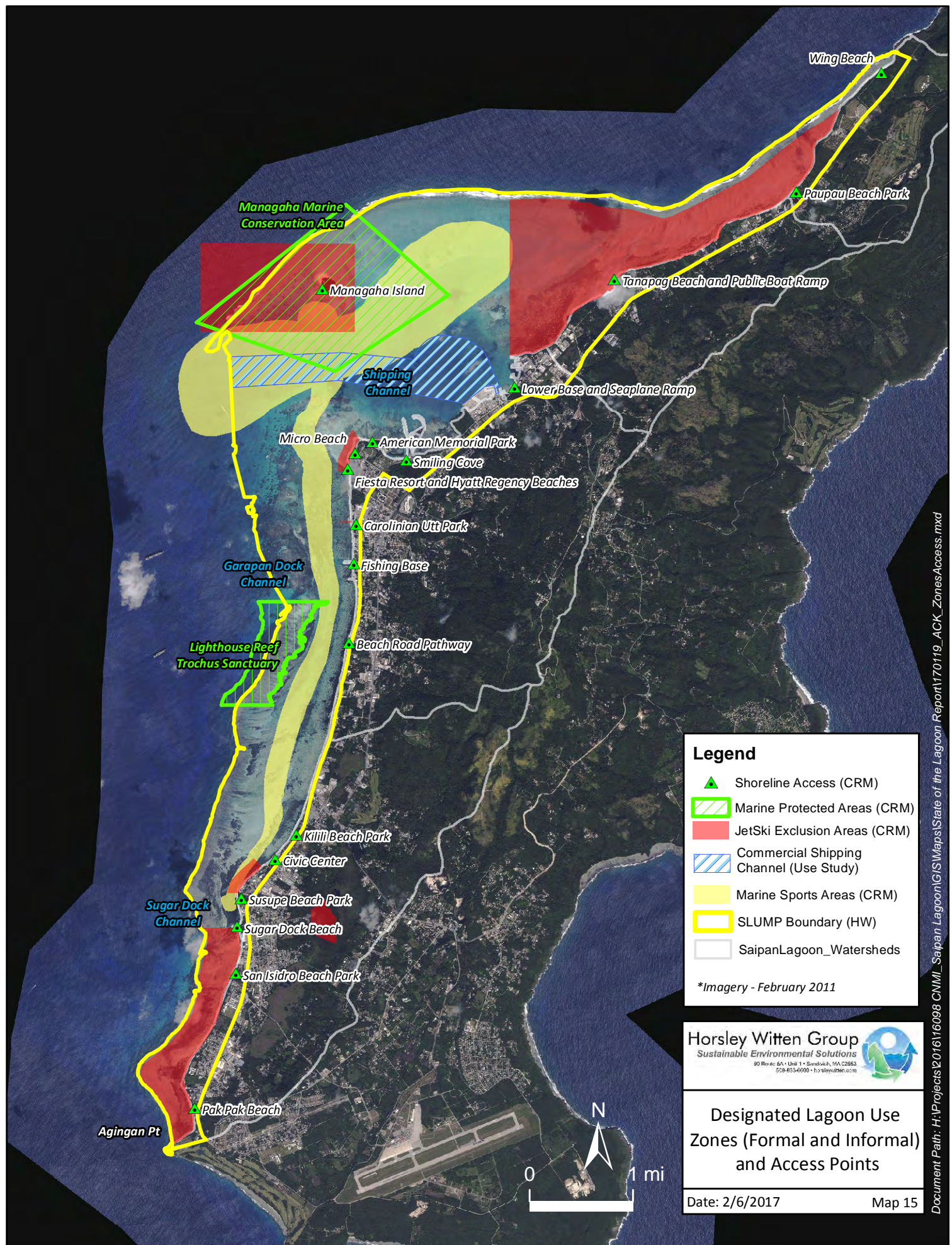


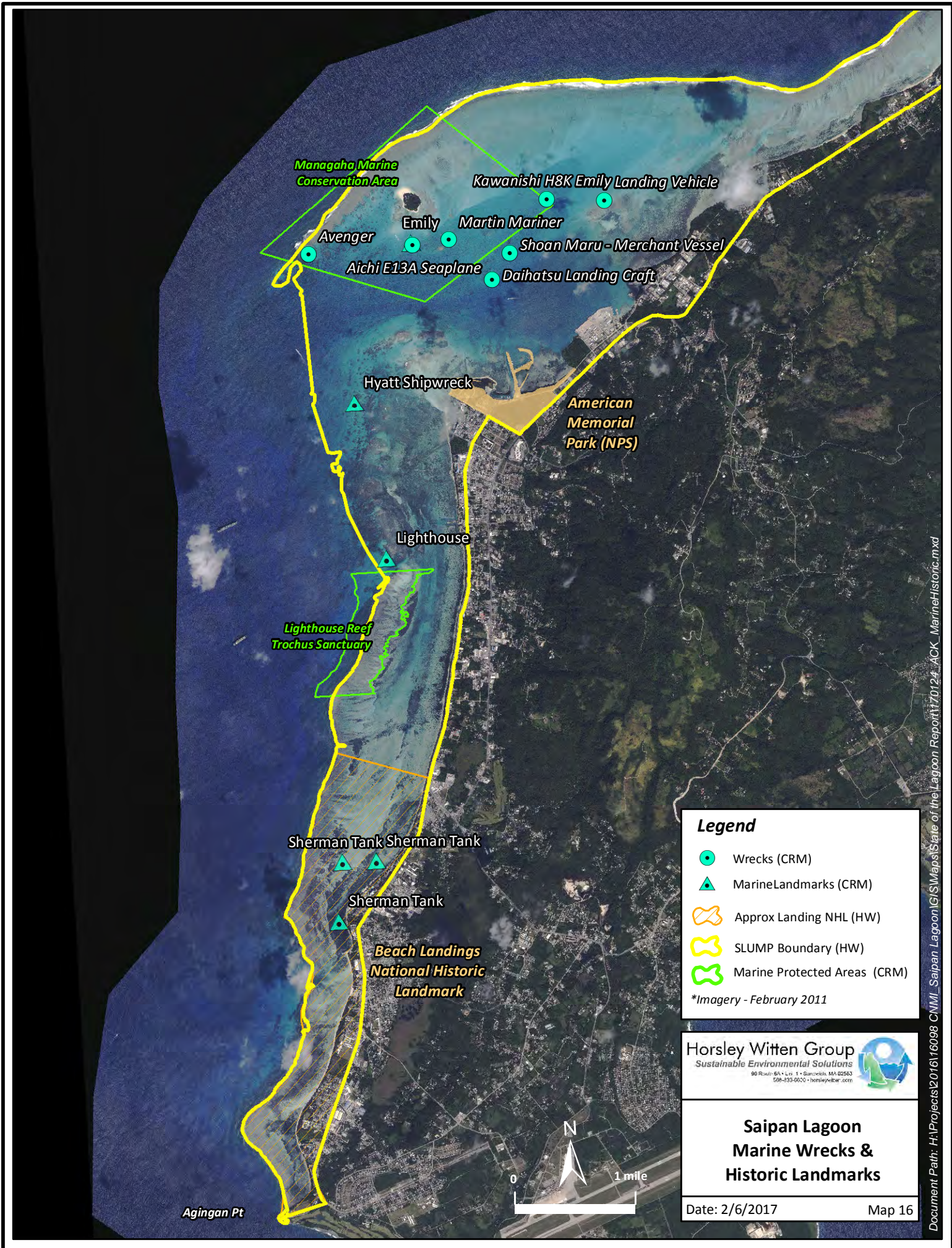
**Dominant Use Groups
Summary Heat Map
(from 2016 User Study)**

Date: 1/25/2017

Map 13







Legend

- Wrecks (CRM)
- MarineLandmarks (CRM)
- Approx Landing NHL (HW)
- SLUMP Boundary (HW)
- Marine Protected Areas (CRM)

*Imagery - February 2011

Horsley Witten Group
Sustainable Environmental Solutions

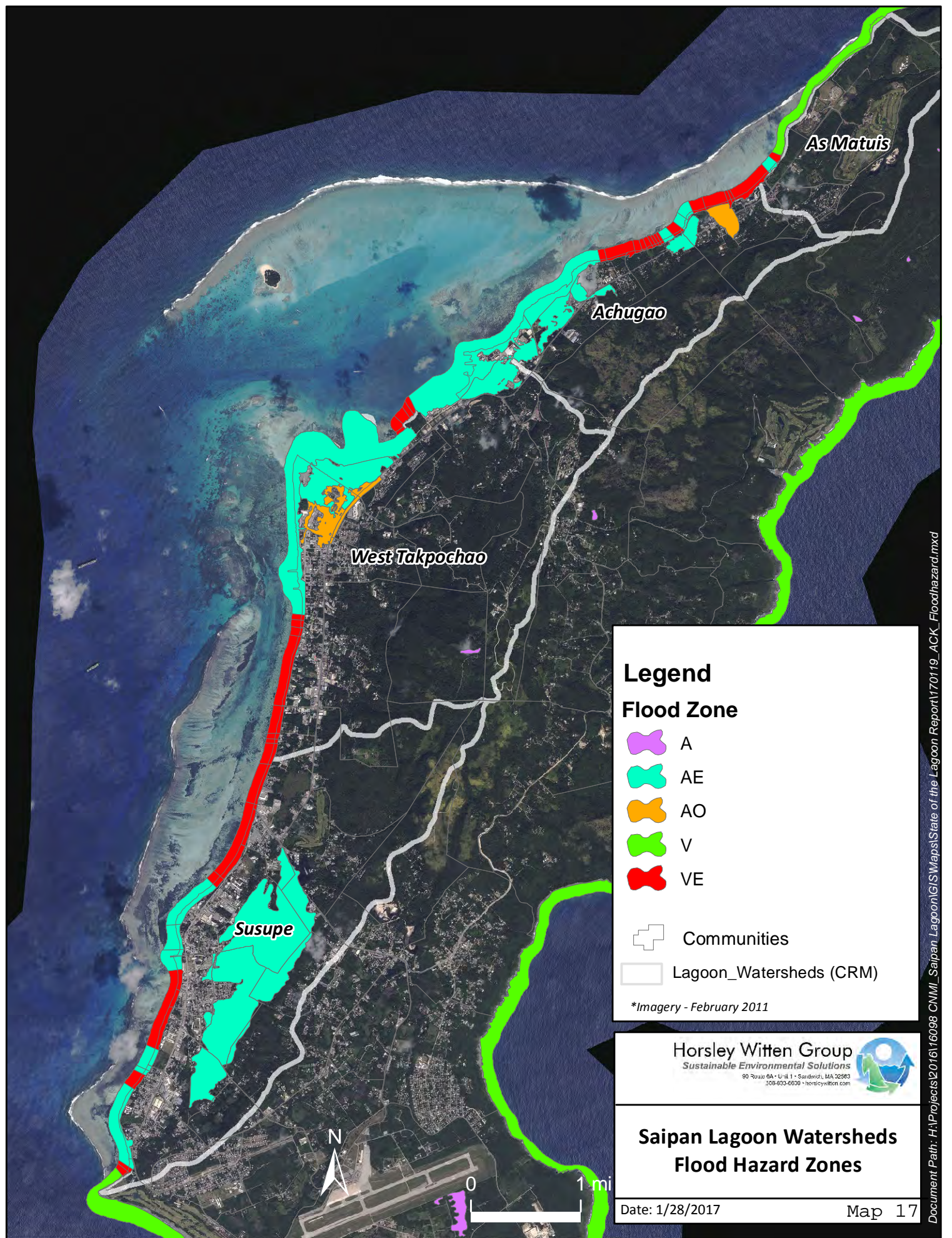
90 Route 26 • Suite 101 • San Jose, CA 95128
408-253-6000 • horsleywitten.com



Saipan Lagoon Marine Wrecks & Historic Landmarks






Date: 2/6/2017

Map 16



Legend

Flood Zone

-  A
-  AE
-  AO
-  V
-  VE



Communities



Lagoon_Watersheds (CRM)

*Imagery - February 2011

Horsley Witten Group
Sustainable Environmental Solutions

90 Route 6A • Unit 1 • Sandwich, MA 02583
208-832-5820 • horsleywitten.com



Saipan Lagoon Watersheds Flood Hazard Zones

Date: 1/28/2017

Map 17

