

# Watershed Working Group Meeting

A scenic view of a tropical coastline. In the foreground, there are lush green hills with dense vegetation. In the middle ground, a bay with turquoise water is visible, surrounded by green hills. The background shows a clear blue sky. The text "Watershed Working Group Meeting" is overlaid on the upper right portion of the image.

February 11, 2015

*Photo by Fran Castro*

# Agenda

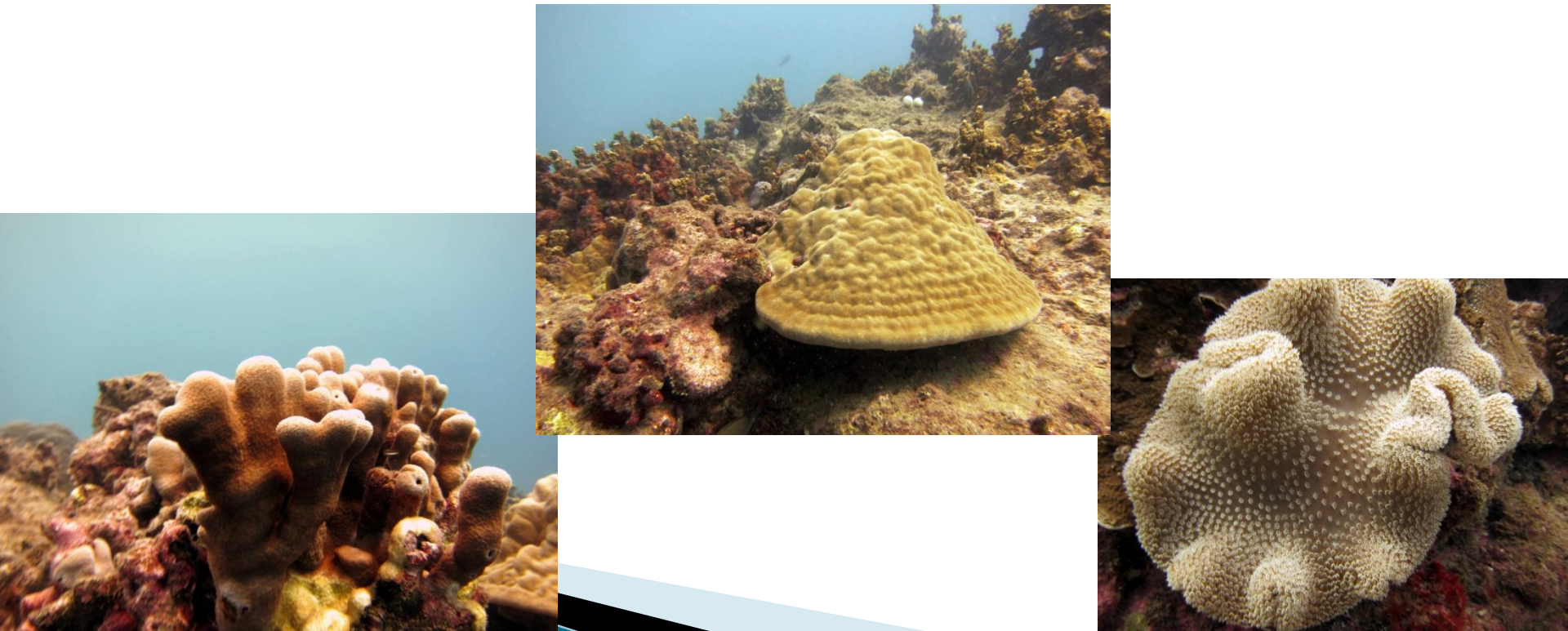
- ▶ Introductions
- ▶ Laolao Bay CAP
- ▶ Project Updates
- ▶ Dates to remember:
  - March 10–11, 2015 *Garapan CAP Update*
  - May 20–22, 2015 *Pacific Islands Watershed Institute*
- ▶ Next meeting





# Laolao CAP History

- ▶ Completed in 2009, review in 2012
- ▶ Based on previous Local Action Strategies
- ▶ Supposed to be revisited bi-annually



# Vision

Laolao is world renowned as a beautiful tropical destination where natural, cultural and historical resources, knowledge and value are abundant for all to enjoy above and below the waves of Saipan

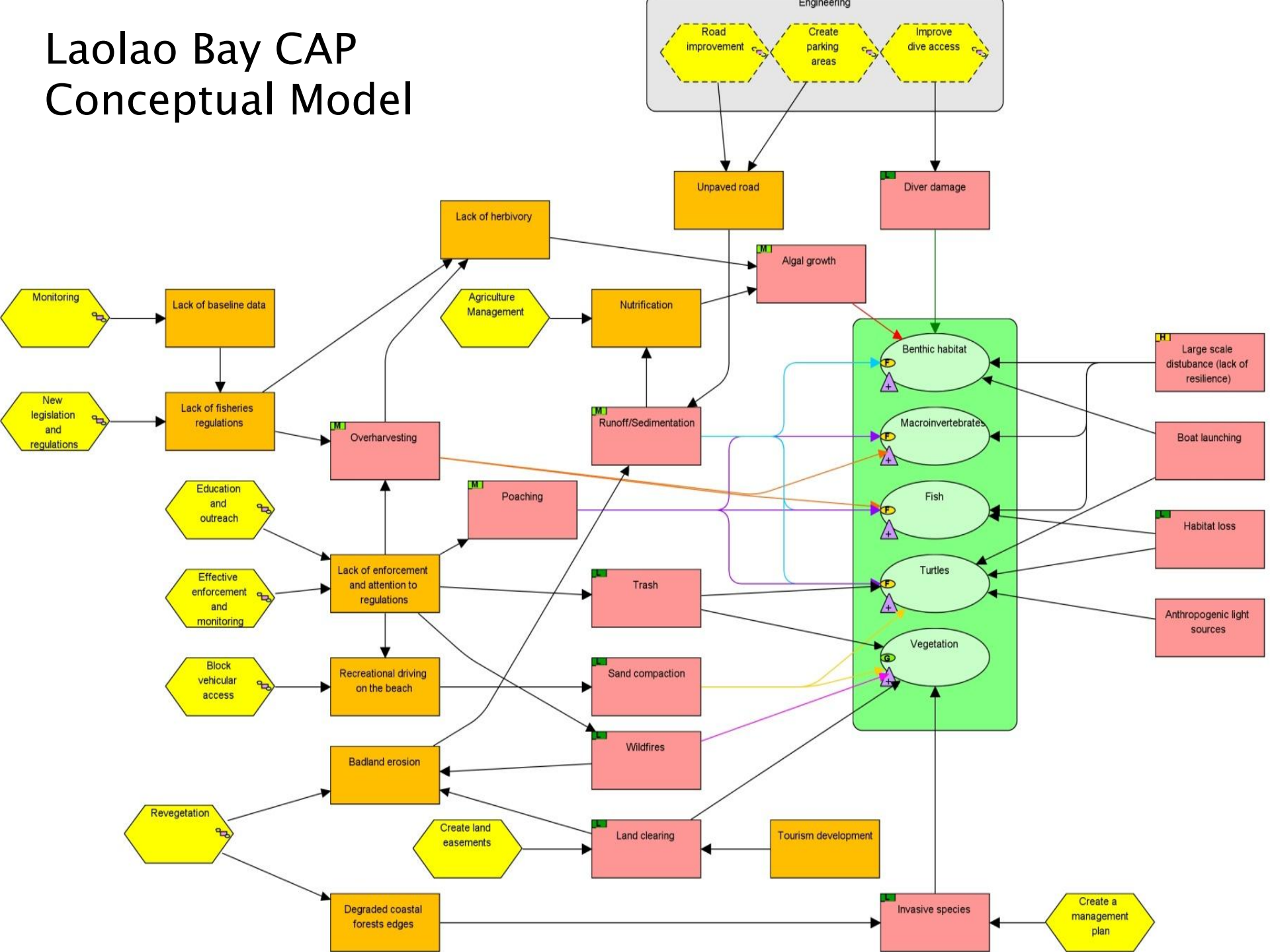


# Mission Statement

In appreciation of the cultural, historical and environmental significance and education, economic and social values that benefit all stakeholders – indigenous people, residents, tourists, traditional fishermen, dive operators and divers – we pledge to protect, preserve, restore and manage Laolao Bay through stakeholder-driven sustainable resource management practices.



# Laolao Bay CAP Conceptual Model





# Target Health Summary

(several new KEAs were introduced in 2012 that have not yet been evaluated)

Target	2011 Status	Trend	2015 Goal
CORAL	Fair	No change	Good
FISH	Poor to Fair	Fluctuating	Good
MACROINVERTEBRATES	Fair	Fluctuating	Good
TURTLES	Fair	Declining	Good
VEGETATION	Good	Improving	Good
OVERALL	FAIR	Fluctuating	GOOD



# Threat Ratings

Evaluate the scope, severity and irreversibility of the current threats for each target. Then brainstorm new threats to targets and evaluate these too.

Threats/Targets	Vegetation	Benthic Habitat	Macro-invertebrates	Fish	Turtles	Summary Threat Rating
Algal growth		High				MEDIUM
Diver damage		Med				LOW
Large scale disturbance		High	High	High		HIGH
Runoff/Sedimentation		Med	Low	Med	Low	MEDIUM
Habitat loss					Med	LOW
Poaching			Med	Low	High	MEDIUM
Overharvesting			Med	Med		MEDIUM
Beach activities	Low				Low	LOW
Trash	Low				Low	LOW
Land clearing/development	Med					LOW
Fires	Med					LOW
Invasive Species	Med					LOW

# Progress on strategic actions and projects

- ▶ ARRA road improvements
- ▶ Revegetation
- ▶ MINA programs
- ▶ Laolao Pride Campaign
- ▶ Socio-economic surveys



# Objectives from 2009 Plan

- Reduce the acreage burned by fires in the Laolao Bay watershed by 50% under normal weather conditions by the end of FY2010  
Obtained since 2008
- Establish at least four canopy species in the Laolao Bay Revegetation Site (by demonstration of a 50% total survival rate over 24 acres) by the end of FY2009  
Obtained in 2011
- Develop a social marketing campaign to address priority threats in Laolao (by the end of 2009)  
Obtained in 2012 and 2014

■ Obtained  
■ In progress  
■ Not obtained  
□ No information

# Objectives from 2009 Plan (cont'd)



By FY2015, achieve statistically significant positive trends compared to baseline

- In the abundance of carnivorous fish, surgeon fish and adult parrotfish
- In the abundance of sea urchins and sea cucumbers
- In coral density per unit area and mean coral colony size



Reduce water turbidity below 1997 ambient levels at both Laolao water quality monitoring sites by 10% by the end of FY2015 and by 50% by the end of FY2018



Increase the number of federal prosecutions of turtle poachers annually in order to achieve a decrease in turtle poaching by 2012



Eliminate all unsustainable beach activities by 2011

- Obtained
- In progress
- Not obtained
- No information



# Objectives from 2012 Plan

## ▶ Enforcement

- Achieve thirty violations phoned in to DFW/DEQ/CRM/Fire enforcement per year in 2012 and 2013
- Increase Tasi-Watch ranger capacity by 50% by the end of 2014 compared to start-up program numbers

## ▶ Education and Outreach

- DEQ/CRM Education and Outreach Coordinators will provide coral reef-focused educational presentations to all 4<sup>th</sup> grade classrooms throughout the CNMI each year from 2013–2015
- The DEQ Education and Outreach Coordinator will organize an Environmental Expo in April each year from 2013–2015 for 1,500 students
- Tasi-Watch volunteers will conduct outreach to Laolao Bay users for 4 hours each day on all weekend days and holidays from June 2012 through 2015

# Objectives from 2012 Plan (cont'd)

## ▶ Engineering

- See a 10% reductions in turbidity at two water quality monitoring sites by 2015; 50% by 2018

## ▶ Vegetation Protection

- Continue recent record of “no fires” through 2014
- Maintain >50% survival of plants in revegetation sites

## ▶ Monitoring and assessment

- Survey two existing and one new marine monitoring program site in Laolao Bay biannually

# Steps for 2015:

- ▶ Evaluate Laolao CAP
- ▶ Analyze available data for KEAs and threat ratings
- ▶ Develop workplan for 2015–2018
- ▶ Identify funding and resources



# 2015 CAP Evaluation Questions

- ▶ Are things moving in the right direction?
- ▶ Are the actions we have taken having the effect we have hoped for?
- ▶ Is the status of targets improving?
- ▶ Are we reversing known threats?
- ▶ Are there issues that we are not confident about?

WHO?

WHERE?

WHEN?





# Agenda

- ▶ Introductions
- ▶ Laolao Bay CAP
- ▶ Project Updates
- ▶ Dates to remember:
  - Garapan CAP Update*  
March 10–11, 2015
  - Pacific Islands Watershed Institute*  
May 20–22, 2015
- ▶ Next meeting: May 13 @ 8:30am
  - Topic recommendations?