

Watershed Working Group

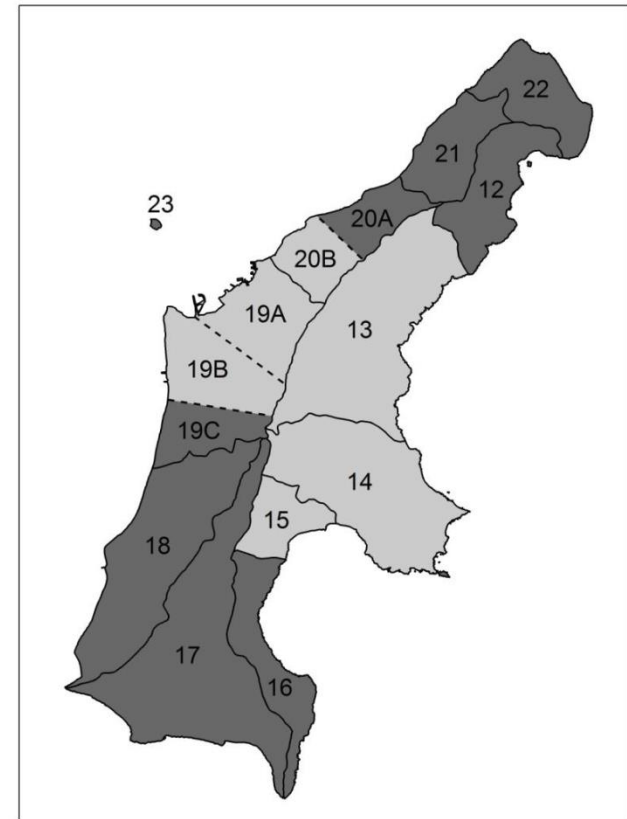
August 14, 2013

Agenda

- Opening, introductions
- Presentation: Surface Water Quality Assurance Monitoring Plan
- Project updates
- Garapan CAP status report
- Next meeting
 - Nov 13, 8:30am
 - Topic recommendations?

Selected Watersheds

- 2012 Integrated report 305(b)/303(d)
- 303(d) High Priority subwatersheds
 1. Talofofo
 2. Kagman
 3. Laolao
 4. Achugao South
 5. West Takpochao North
 6. West Takpochao Central



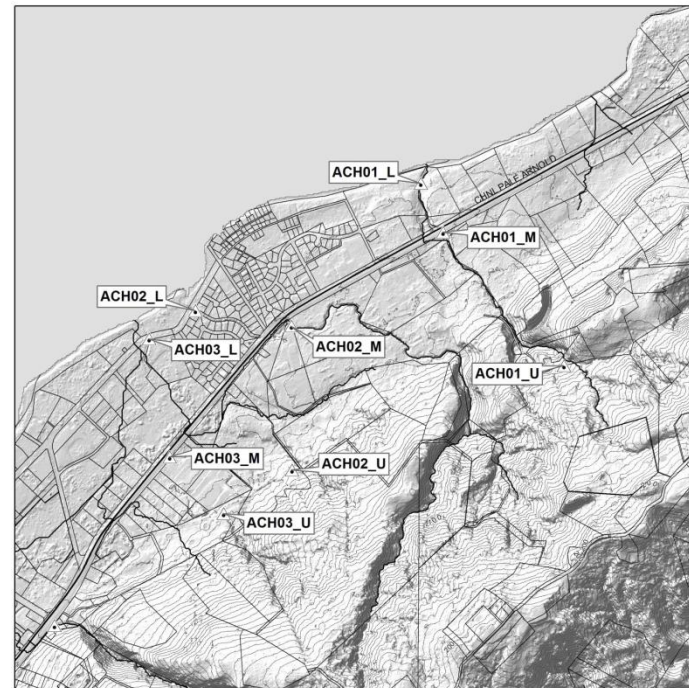
1.0 Achugao South

- Three streams
- LW: residential and light commercial
- UW: limited residential, small farms
- Impairments: enterococci, DO, biocriteria, OP
- Concerns: OSDS, livestock, sediment

880 acres

1.2 mi coast

6.3 mi stream



Achugao-South Watershed #20B

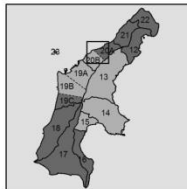
UTM WGS 1984
Zone 55 North



1:13,000

Contour interval = 15 ft

Feet
0 250 500 1,000 1,500 2,000



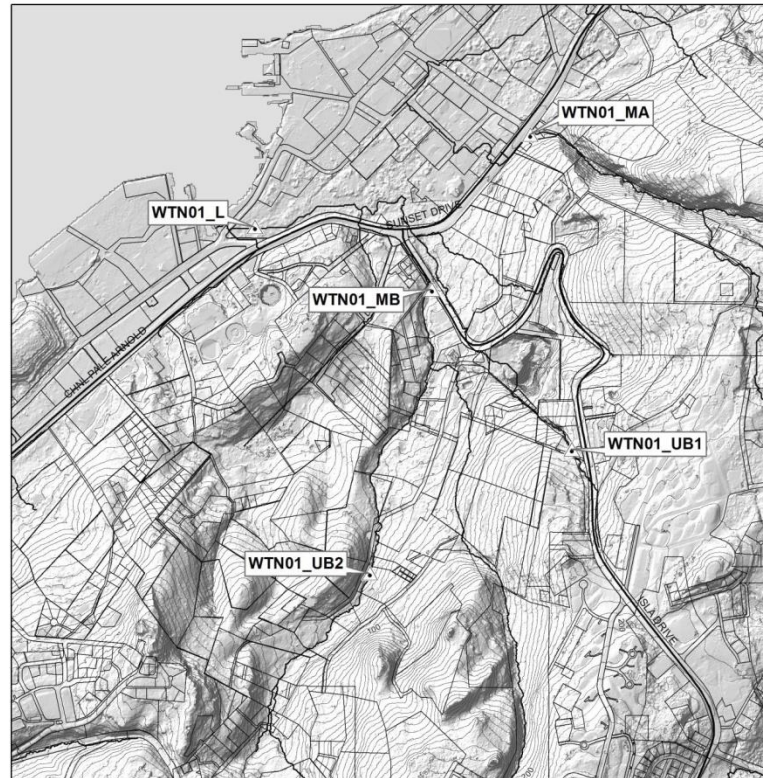
2.0 West Takpochao North

- Ephemeral drainages
- LW: heavy development
- UW: small commercial and agricultural
- Impairments: enterococci, DO, biocriteria, OP
- Concerns: sanitary sewer overflows, urban runoff, sediment, Puerto Rico dump

1752 acres

4.1 mi coast

7.1 mi stream



**West Takpochau-North
Watershed #19A**

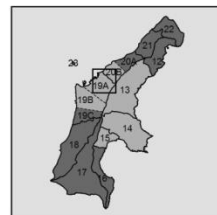
UTM WGS 1984
Zone 55 North



1:13,000

Contour Interval = 15 ft

Feet
0 250 500 1,000 1,500 2,000



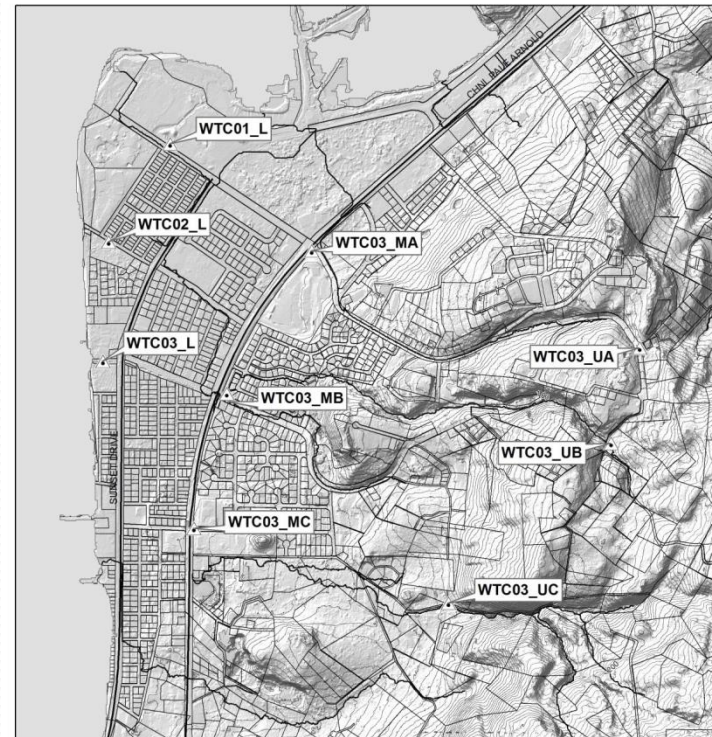
3.0 West Takpochao Central

- Ephemeral drainages (channelized)
- LW: heavy development
- UW: small commercial and agricultural
- Impairments: enterococci, mercury, DO, biocriteria, OP
- Concerns: urban runoffs, sewer discharge, hospital waste

1620 acres

3.0 mi coast

Channelized streams



West Takpochao-Central Watershed #19B

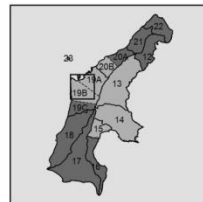
UTM WGS 1984
Zone 55 North



1:14,500

Contour Interval = 15 ft

Feet
0 250 500 1,000 1,500 2,000



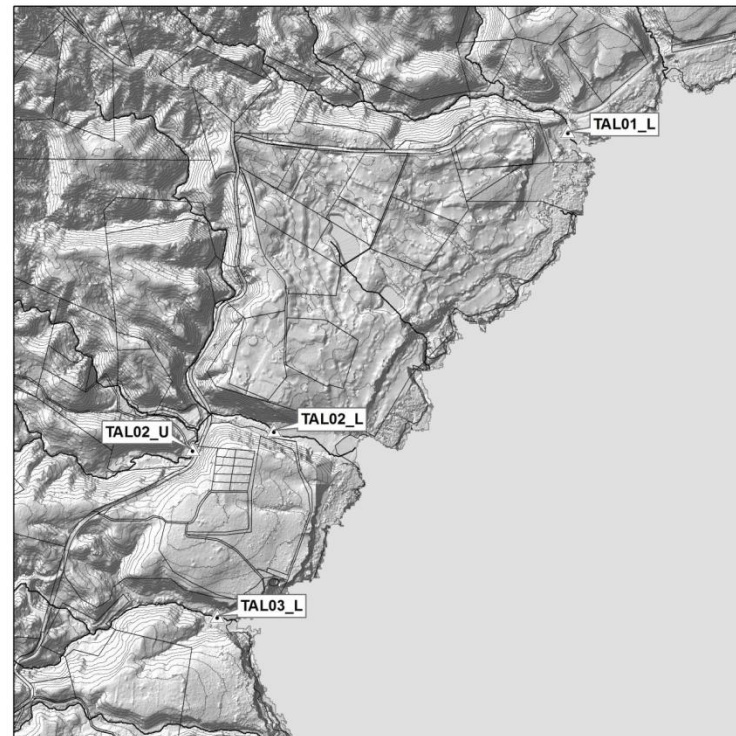
4.0 Talofofo

- Annual/perennial streams
- LW: golf course, jungle
- UW: small residential, agricultural
- Impairment: enterococci, OP
- Concerns: sedimentation, livestock, nutrients

4439 acres

4.6 mi coast

31.1 mi stream



**Talofofo
Watershed #13**

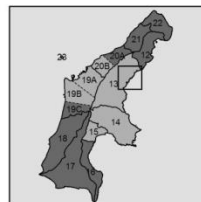
UTM WGS 1984
Zone 55 North



1:13,000

Contour Interval = 15 ft

Feet
0 250 500 1,000 1,500 2,000



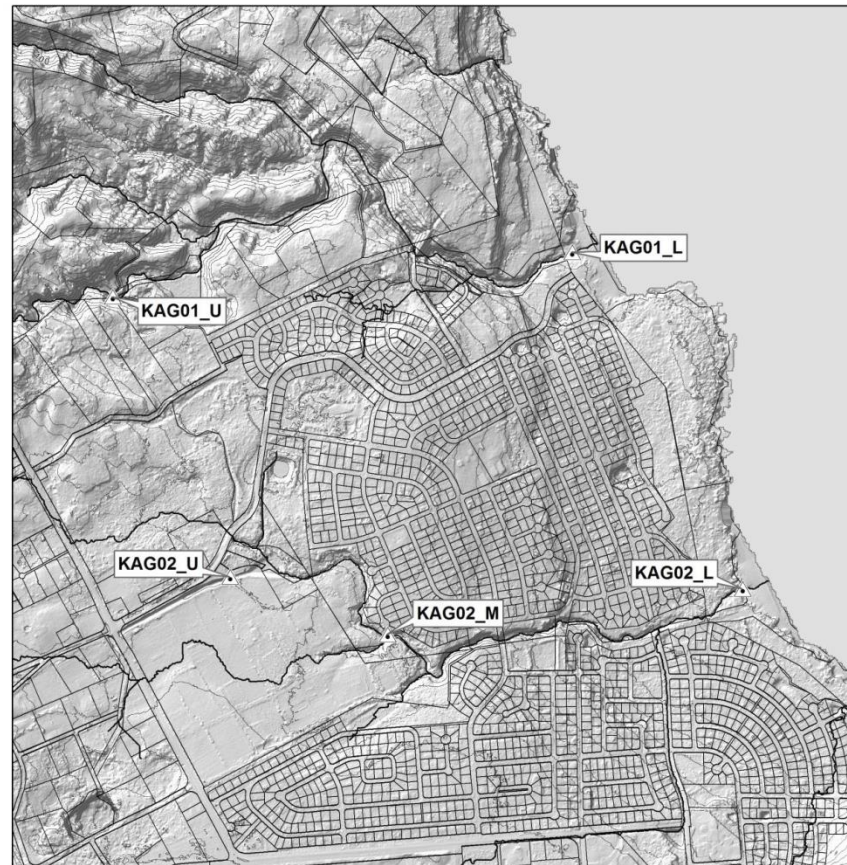
5.0 Kagman

- Ephemeral streams, Kagman Watershed project
- LW, UW: homestead, agriculture, conservation areas
- Impairment: enterococci, OP
- Concerns: OSDS, sediment, livestock, nutrients

3659 acres

5.2 mi coast

8.3 mi stream



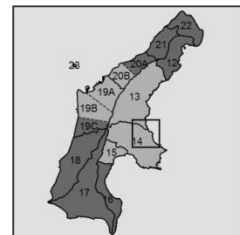
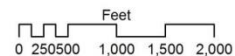
**Kagman
Watershed #14**

UTM WGS 1984
Zone 55 North



1:13,000

Contour Interval = 15 ft



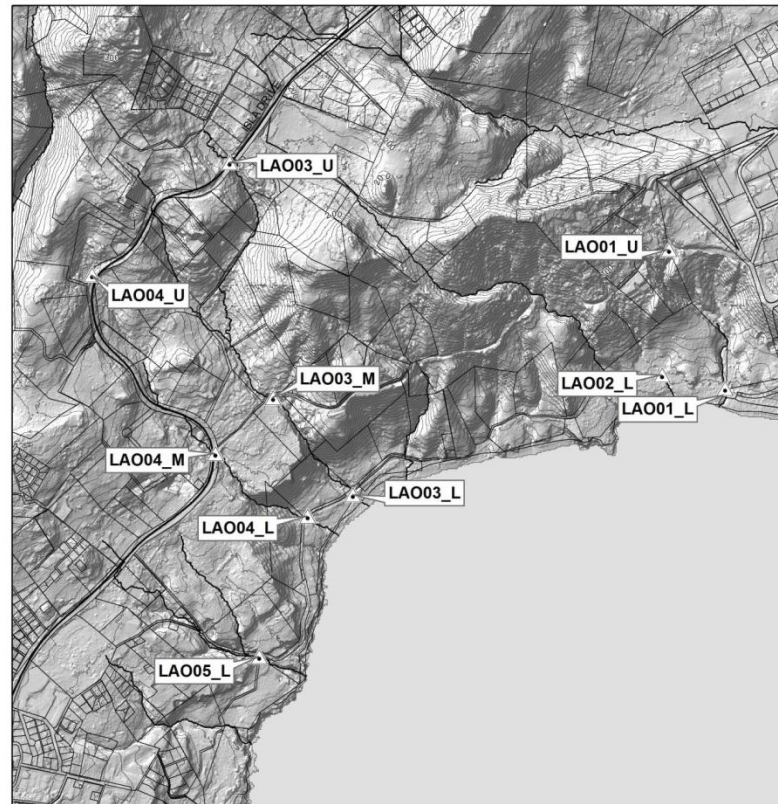
6.0 Laolao

- Ephemeral streams
- LW: low development, forest
- UW: forest, plantations, urban
- Impairment: enterococci, biocriteria, OP
- Concerns: OSDS, sediment, livestock

927 acres

2.1 mi coast

4.6 mi stream



**Lao Lao
Watershed #15**

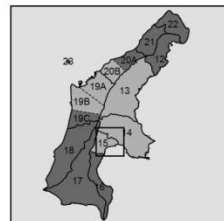
UTM WGS 1984
Zone 55 North



1:14,500

Contour Interval = 15 ft

Feet
0 250 500 1,000 1,500 2,000



Garapan status report

- Final draft completed with all comments
- DEQ, CRM, DFW need to sign
- Dispersal plan
 - Legislature
 - Chamber of Commerce
 - community meeting
 - other?

Next Meeting

- November 13, 8:30am
- Topics
 - Jihan Buniag, RARE Pride campaign launch
 - Other recommendations?